

ACCESS SAFETY PLATFORM TYPE MB-I



Type MB-I with straddle stacker



Type MB-I chain security with forklift truck



Security to prevent slipping from the straddle stacker



Secured by bolt to prevent slipping from the forklift truck



Anchorage point for protective equipment

Type	Dimensions in mm (l x w x h)	Floor area in mm	Total permitted weight in kg	Weight in kg	Fork sleeve inside dimensions in mm		
					A	B	C
MB-I / MB-I/A	775 x 800 x 2050	645 x 650	180	60	165	210	85

Finish:

RAL 2000

Access safety platform for straddle stackers and forklift trucks. Ensures safety for repairs and maintenance work.

- number of persons permitted: 1
- approved by the german technical inspection agency "TÜV", in compliance with the "BGV" (German accident prevention regulations)
- fork sleeves
- safety mechanisms to prevent slipping for straddle stackers and forklift trucks
- galvanized tool deposit
- 4 stirrups

Types available

Type MB-I

- without anchorage point for protective equipment



Type MB-I/A

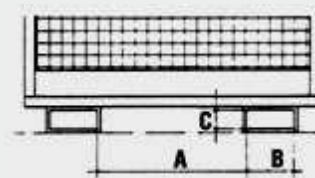
- with anchorage point for protective equipment

TÜV Austria

Accessory

- anchorage point for protective equipment (Type MB-I)

Fork sleeve inside dimensions in mm



for all access safety platforms on this side

ACCESS SAFETY PLATFORM TYPE MB-ST



Type MB-ST



Type MB-ST/T

Type	Dimensions in mm (l x w x h)	Floor area in mm	Total permitted weight in kg	Weight painted in kg	Fork sleeve inside dimensions in mm		
					A	B	C
MB-ST	1115 x 1200 x 1890	800 x 1200	300	130	600	200	80
MB-ST/T	1115 x 1200 x 1890	800 x 1200	300	130	600	200	80

Finish:

RAL 2000

RAL 5012

hot-dip galvanized

For shelf operations and maintenance work at high altitude work places

- number of persons permitted: 1
- fork sleeves with safety mechanism to prevent slipping
- galvanized tool deposit

Types available

Type MB-ST

- two-hand control contact switch, flash light, cable retractor drum with 8m cable, plug, socket and spare plug
- picked up lengthwise by a forklift truck

Type MB-ST/T

- similar to type MB-ST, but with circuit breaker for the door

Accessory

- anchorage point for protective equipment